

Strengthening the Steps to Success



Youth Master Plan
for Palm Beach County

The Backstory

Why a Youth Master Plan?

- To serve as a blueprint for setting priorities and taking action to improve the lives of children in Palm Beach County
- To address existing opportunity gaps
- To align multiple ongoing efforts
- To strengthen the key supports children need to make steady progress towards adult success



Birth to 22 **Mission**

To support the healthy growth, development and education of Palm Beach County children and youth prenatal through adulthood so that they can graduate from high school and succeed in life.



Birth to 22 Core Beliefs



All Parents ...

- Are the experts on their child
- Have something important to share in our community

All Children ...

- Can achieve their highest potential
- Should have the support they need to chase their dreams
- Want to have their own voices in shaping their futures and solving their challenges

We Believe

Our Community...

- Wants all of our children to thrive
- Is stronger when we work together
- Expects networks, coalitions and partners to support each other and maximize their resources

In ...

- Equity
- Collaboration and engagement
- Continuous improvement
- Brighter futures for all our children,
Birth to 22!

Birth to 22 Equity



Special Populations

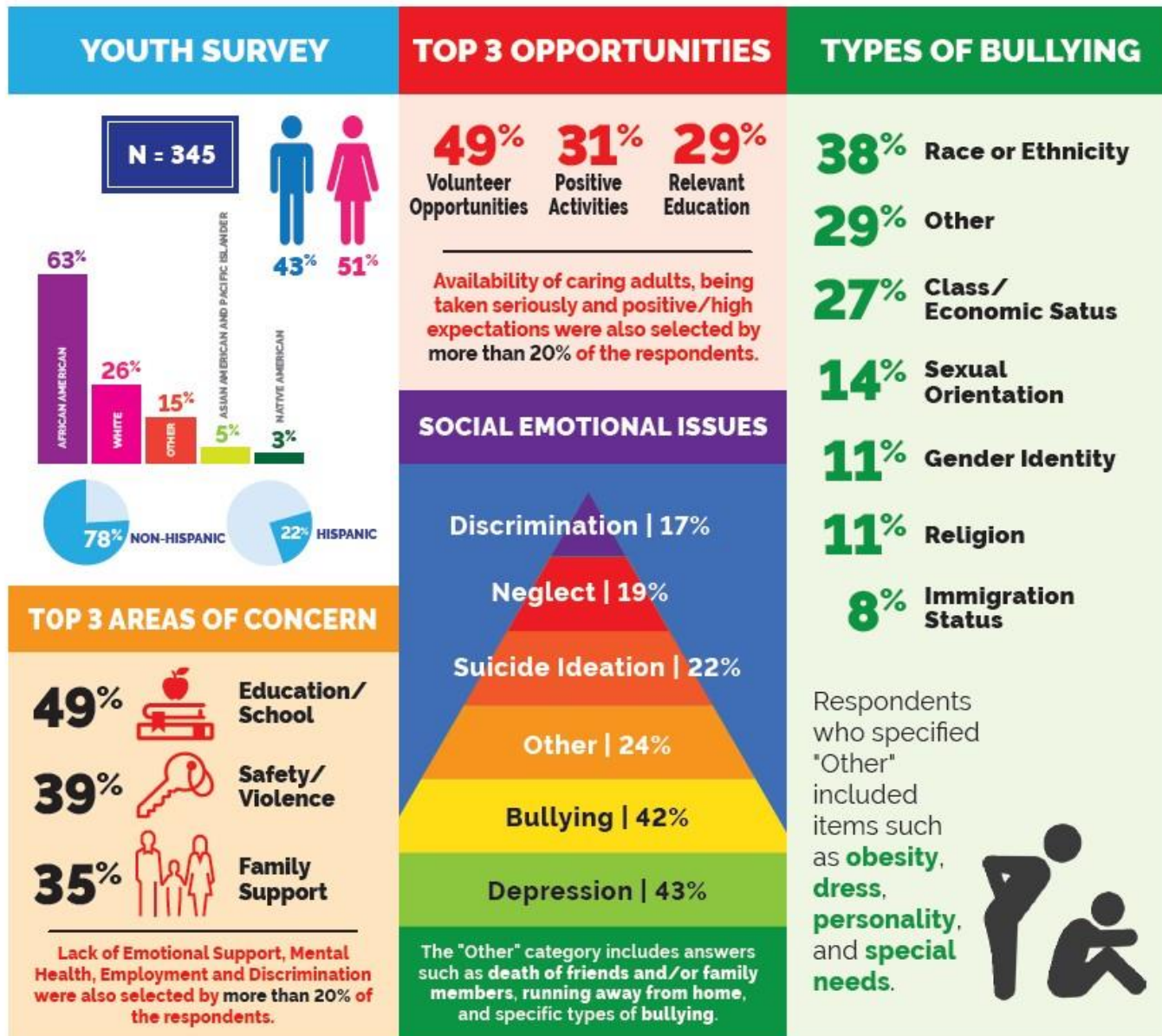
Those with special needs LGBTQ Black/African American Hispanic/Latino
Care-giving youth Court-involved, homeless & foster care youth Youth
presenting with behavioral health concerns.



Community Conversations



Birth to 22 Youth Survey



Birth to 22 Findings



6 Emerging Themes

Economics

Lack of
Employment

Poverty

Transportation

Underskilled

Availability &
Access to
Community
Resources

Financial
Management

Social/ Emotional Challenges & Supports

Anxiety, Peer
Pressure, Self-
Esteem

Distractions

Motivation

Trust Issues

Bullying

Sexual Abuse

Substance
Abuse

Health & Wellness

Hunger,
Healthy Food
Choices

Substance
Abuse

Behavioral
Health

Violence,
Trauma

Special Needs

Access to
Healthcare/
Prenatal Care

Parenting, Home Environment, Mentors & Role Models

Family
Stressors

Mentors/Role
Models

Parenting Skills

Employment
Conflict

Home
Environment

Neglect/Abuse

Language/
Cultural Shifts

Emotional
Supports

Educational Supports

School
Pressures

Testing vs.
Skills

Educational
Resources

Systemic
Barriers

Readiness and
Retention

Special Needs

Community Stressors, Systemic Barriers & Media

Community
Attitudes

Safety &
Violence

Resources

Cultural Shifts

Technology

Religion

Birth to 22 Action Areas



Economic Access

- Mitigate the impacts of poverty on youth options
- Increase affordability of basic services
- **Build education to employment pathways for disconnected youth**



Parenting & Role Models

- **Increase effective parent support programming**
- **Increase outreach to parents through communications, natural support networks & mentors**



Social & Emotional Supports

- **Strengthen quality out-of-school time opportunities**
- **Promote social and emotional learning across all environments where young people spend their time**



Educational Supports

- **Promote educational equity for all students– from pre-K through post-secondary education**
- **Support access to and success in higher education for middle school through post-secondary students**
- Increase parent, community & business involvement in education



Health & Wellness Supports

- **Ensure access to healthy foods and exercise options**
- Improve physical and behavioral health care access
- Address teen health risks



Removal Of Community Stressors & Systemic Barriers

- **Become a trauma-sensitive community**
- Ensure safety & justice

Equity Agenda

Ensure needs of all are addressed, including: Those with **special needs**, LGBTQ, **Black/African American & Hispanic/Latino**, care-giving youth, court-involved youth, homeless & foster care youth, and youth presenting with **behavioral health** concerns



Birth to 22 Action Teams

Safety and Justice Team

- Examination and alignment of youth (8-24) criminal justice related committees
- Identification of youth recreational supports serving DJJ/Dual Status and other deep end system involved youth
- Enhancing and expanding resources and activities, breaking down barriers and increasing programming options for this population

Trauma Action Team

- Educate community re: effects of trauma on youth
- Development of a community trauma responsive system
- Supporting trauma informed intervention and restorative practices
- Engagement with UM for possible Capstone projects



Birth to 22 Action Teams

Parenting/Mentoring Action Team

- Increase effective parental programming, support and outreach in order to develop natural support networks and mentors.
- Actively engage with parents and caregivers (including foster parents) to assess barriers to engagement in service systems and supports.
- Build formal and informal parent/caregiver support systems that are responsive and accessible to parent needs.
- Educate and highlight parents as role models and experts.

Social Emotional Learning Action Team

- Wallace Grant for PrimeTime and the School District of Palm Beach County
- Incorporation of SEL in OST programs



Birth to 22 **Action Teams**

Educational Equity Action Team

- Develop culturally responsive educational practices throughout the District

Access to Health and Wellness Action Team

- Coordination with Hunger Initiative
- Examination of barriers

Access and Success in Higher Education Action Team

- Achieve Palm Beach County



Birth to 22 Future Leaders United for Change



FUTURE LEADERS UNITED FOR CHANGE COUNCIL MEETING

TUESDAY, JAN. 6, 2018 | 5:30-7:30 P.M.

Youth Services Department

50 S Military Trl
2nd floor - Room #2N-123
West Palm Beach, FL 33415

RSVP on [Eventbrite](#).

The council's mission is to be the voice for the youth of Palm Beach County creating leaders through self-motivation, determination and education

ATTEND A MEETING AND BECOME A LEADER.

Youth council that will:

- Provide input on identified issues
- Inform the work of the County's Youth Master Plan
- Raise awareness about issues youth are experiencing

REQUIREMENTS:

- Must be between the ages of 11-22
- Reside within Palm Beach County

REFRESHMENTS WILL BE PROVIDED.

CBAs: SEND US YOUR REFERRALS!

Get engaged, get involved.

For more information,
please contact Gregory Gabriel
at (561) 242-5737 or email
YSD-Future-Leaders@pbcgov.org.

Text @DMEJ to 81010 FutureLeaders Ggabriel@pbcgov.org FutureLeadersUnited



Palm Beach County Board of
County Commissioners

Birth to 22 Steps to Success

Steps to Success

The Steps to Success represent 6 domains of child and youth development – physical health, behavioral health, academic readiness, social/emotional well-being, career readiness and connection and contribution to community and society. These steps represent key markers of success that allows us to access developmental outcomes. As children and youth make their way up these stairs, we are able to track their progress or lack thereof. The indicators, or measures, for these different areas are shown above the stair steps in the green text (for things we are trying to promote) and orange text (for things we are trying to prevent). Understanding what this data looks like for different subpopulations within Palm Beach County is also essential. In order to achieve those outcomes, children and youth need key supports along the way, through a combination of effective parenting and safe and nurturing families and communities. A sample of possible measures are listed below.

Steps to Success & Supports for Success

STEPS TO SUCCESS: Child & Youth Outcomes & Indicators



ECONOMIC ACCESS: Percentage of Families in Poverty • Access to Housing • Workforce and Job Development Opportunities • Number and Percentage of Households receiving Food Stamps • Access to Transportation

PARENTING & ROLE MODELS: Parenting stress (situational are chronic) • Knowledge of Parenting and Child Development • Support Services for Parents

SOCIAL & EMOTIONAL SUPPORTS: Access to Afterschool Services • Access to Early Childhood Education and Care • Mental Health Assessments & Services • Caregiver Stability • Bullying

EDUCATIONAL SUPPORTS: Educational Attainment • Advancement via Individual Determination • Parent Education & Involvement • Healthy School Connections • Effective Schools

HEALTH & WELLNESS SUPPORTS: Access to Health Insurance • Food Deserts • Physical/Eye/Hearing Exams • Late or No Prenatal Care • Access to Safe and Clean Parks and Recreation Spaces

REMOVAL OF COMMUNITY STRESSORS & SYSTEMIC BARRIERS: Crime Reduction • Access to Domestic Violence Services

KEY: + Child & Youth Indicator (Promotion) - Child & Youth Indicator (Prevention) Blue = Family, School or Community Supports **Bold = measures & data currently available** *Italics = measures and/or data TBD*



Birth to 22 Website



Birth to 22 Website

Pbcbirthto22.com



[Events Calendar](#)



[Resource Directory](#)



Birth to 22 Accomplishments

Dollars Leveraged

- Dual Status Grant
- Wallace Grant

Convenings

- Trauma Talks Summit
- My Brother's Keeper Race to Equity Summit
- Youth Summits
- Trauma and ACES (Adverse Childhood Experiences)
- **Ready by 21 Conference – April 18-20**



Birth to 22 Accomplishments

Professional Development

- Increased trauma training
- Trauma-informed care training across agencies (ex: law enforcement, school personnel, legal professionals/judges, childcare centers, etc.)

Birth to 22 Direct Outputs

- Development of the Palm Beach County Youth Master Plan (YMP)
- Launch of Online Resource Directory and Community Events Calendar
- Creation of Future Leaders United for Change
- Formation of a Trauma-informed Community
- Creation of a Funders group



Birth to 22 Accomplishments

Efficiencies

- Reduction in community meetings through more streamlined efforts and deliberate action to connect bodies of work
 - Elimination of Health Department's Obesity Coalition and joining with Birth to 22 Health & Wellness Action Team
 - School Justice Partnership's trauma work folded into Birth to 22 Trauma Sensitive Action Team
 - Eliminated the need to create a separate local plan required by the State Department of Juvenile Justice
 - Achieve Palm Beach County
 - Coordination of funding
 - Connecting other major plans



Birth to 22 Current Structure

Leadership & Engagement Structure



Backbone Support Functions: YSD & CSC Staff



ACTION AREAS CODING

UNDERWAY:
Collaboratives already at work in this area are connecting to Birth to 22

EMERGING
Collaborative work in this area may initially be coordinated through a Birth to 22 working group

Birth to 22 Next Steps for YMP

Recommendations to Inform Action

- Develop mechanism for regular reporting of child and youth well-being, including status of community supports
- Expand use of online program database
- Assess status of evidence-based approaches to programming and practice and identify additional programs to address identified needs
- Formalize mechanisms for engaging existing coalitions and networks, and regularly update Mapping Moving Trains Survey
- Identify & advocate for legislative priorities



Birth to 22 Q&A



www.pbcbirthto22.com

pbcbirth22@pbcbgov.org

